

Draw deeper insights  
from your X-ray images.



# High-definition imaging fuels better decisions sooner.

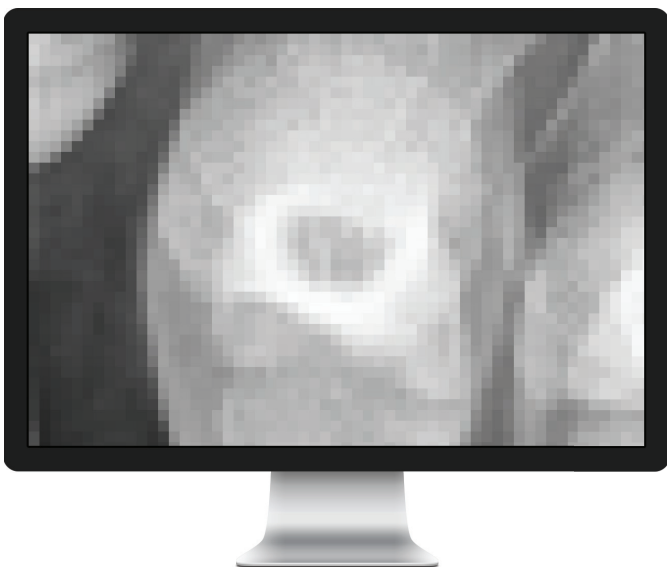
The Konica Minolta AeroDR® HD Flat Panel Detector **provides extremely high-definition radiographic imaging with the same recommended dose<sup>1</sup>**, housed in a lightweight, durable and highly water-resistant enclosure. AeroDR HD is equally suitable for retrofit, new X-ray room, or portable unit applications, equipping you with more visual information to make faster, better patient decisions.

### The Picture You Need When Detail Counts

The AeroDR HD detector incorporates 100-micron pixels for a 3488 x 4256 pixel count — up to four times more than standard resolution panels. This high resolution allows you to enlarge small structures on an image to conduct the precise analysis required for extremities, pediatrics and other specialties where subtle image details and dose efficiency are vital to diagnosis. A user selectable High Dynamic Range mode aggregates data to provide faster processing, wider dynamic range and high contrast for larger anatomies.

Improved AeroSync® automatic exposure detection for use without a detector connection, simplifies integration and supports exposure durations of up to 4 seconds, with high sensitivity to accommodate bariatric, low-power and other exams that require longer exposure times.

Normal Scan



*Blurring can occur when enlarging a normal scan.*

High-Definition Scan



*Small areas of an image remain clear and crisp when enlarged in a high-definition scan, giving you visibility into subtle details that can aid in diagnosis.*



*Easy to read display.*



*Magnetic connection for docking and charging.*



*Austenite corners protect against scratches and cracks.*

### Advanced Technology That Goes Almost Anywhere

Compact and portable, the AeroDR HD detector measures just 14" x 17" and weighs only 5.7 lbs. The size is suitable for upgrades and new installations in standard X-ray systems, with or without a connection to the generator.

A durable protective enclosure absorbs impact from bumps and accidental drops, while an IPX6 waterproof rating safeguards your investment from inevitable spills encountered during portable emergency use. The built-in power cell provides up to 8 hours of use after a 30-minute charge<sup>2</sup>, helping to keep you productive on the go.

### Compatible with Other Time-Saving DR Solutions

AeroDR HD high definition imaging can easily be added to any existing AeroDR or CS-7 based CR environment to provide additional radiographic capacity and capabilities. It is fully compatible with the complete family of legacy AeroDR Systems and can be added to or shared without modifications<sup>3</sup>.

# AeroDR<sup>®</sup> HD Wireless Flat Panel Detector

---

## Technical Specifications

- 100-micron pixel size
- 72% detector quantum efficiency (DQE @ 0Lp/mm)
- 3488 x 4256 pixels (14" x 17" Detector)
- Cycle time:
  - 4 seconds (High Dynamic Range)
  - 7 seconds (High Resolution)
- 5.7 lbs. (2.6 kg)
- Improved resilience<sup>1</sup> to:
  - Loads (25% higher)
  - Drops (20% higher)
  - Bending (resists deformation)
  - Liquids (IPX6 waterproof compliant)
- Up to 8 hours of use after a 30-minute charge in High Dynamic Range mode

## Flexible, Valuable Blue Moon Protection

To minimize downtime, maximize productivity and eliminate risk over a long functional life, Konica Minolta's Blue Moon service offering for AeroDR Systems goes beyond traditional warranty and equipment service to include onsite and ongoing remote support, 24/7/365 technical assistance, and applications training. Choose from three plan levels – Blue Moon Elite, Select or Basic – to meet your needs and budget. Further improve your experience with Konica Minolta's AeroRemote™, a cloud-based, active monitoring solution that detects and reports critical and ongoing performance issues, and provides automatic reports that you can review anywhere. This allows you to act on urgent situations immediately and address potential system or user issues before they become problems.

1. When compared with other AeroDR products.

2. When run in Power Save. Assumes images captured in each study, studies in five-minute intervals, one minute for patient positioning.

3. Not compatible with AeroDR AC configurations.

AeroDR and AeroSync are registered trademarks and AeroRemote is a trademark of Konica Minolta, Inc.

© 2016 Konica Minolta Healthcare Americas, Inc.



**KONICA MINOLTA**

**Konica Minolta Healthcare Americas, Inc.**

411 Newark Pompton Turnpike  
Wayne, New Jersey 07470  
Tel: (973) 633-1500 Fax: (973) 523-7408  
[konicaminolta.com/medicalusa](http://konicaminolta.com/medicalusa)

M1006 1116 RevA